

JOHANN JOSEPH FUX

(um 1660–1741)

Stabat Mater

K 267/268

Violoncello / Violone

Edition: Helene Widmoser

nach A-Wn Mus.Hs. 16414

Fux concertato Nr. 7

Austrian Centre for Digital Humanities and Cultural Heritage

Österreichische Akademie der Wissenschaften

2022

www.fux-online.at

https://doi.org/10.1553/fux_concertato_07

 CC-BY-NC 4.0 de

 CONCERTATO

Stabat Mater

Johann Joseph Fux

Soli



Quis est homo



45 Soli

52

60

67

75

83

91 **Adagio**
Soli

99

107

115

123

123

This musical staff contains measures 123 through 129. It begins with a treble clef, a key signature of two flats, and a 12/8 time signature. The music consists of eighth notes, quarter notes, and half notes, some with accidentals (flats). Measure 123 has a fermata. The staff concludes with a double bar line.

130

130

This musical staff contains measures 130 through 136. It begins with a bass clef, a key signature of two flats, and a common time signature. The music features quarter notes and half notes, with several flats and accidentals. The staff concludes with a double bar line.

137

137

This musical staff contains measures 137 through 143. It begins with a bass clef, a key signature of two flats, and a common time signature. The music consists of quarter and half notes. The staff concludes with a double bar line.

144

144

This musical staff contains measures 144 through 151. It begins with a bass clef, a key signature of two flats, and a common time signature. The music features quarter and half notes. The staff concludes with a double bar line.

152

Tutti

152

This musical staff contains measures 152 through 156. It begins with a bass clef, a key signature of two flats, and a common time signature. A double bar line is followed by the marking "Tutti". The music features eighth and sixteenth notes. The staff concludes with a double bar line.

157

Soli

157

This musical staff contains measures 157 through 162. It begins with a bass clef, a key signature of two flats, and a common time signature. A double bar line is followed by the marking "Soli". The music features eighth and sixteenth notes. The staff concludes with a double bar line.

163

163

This musical staff contains measures 163 through 168. It begins with a bass clef, a key signature of two flats, and a common time signature. The music features quarter and half notes. The staff concludes with a double bar line.

169

169

This musical staff contains measures 169 through 175. It begins with a bass clef, a key signature of two flats, and a common time signature. The music features quarter and half notes. The staff concludes with a double bar line.

176

176

This musical staff contains measures 176 through 182. It begins with a bass clef, a key signature of two flats, and a common time signature. The music features quarter and half notes. The staff concludes with a double bar line.

183

183

This musical staff contains measures 183 through 188. It begins with a bass clef, a key signature of two flats, and a common time signature. The music features quarter and half notes. The staff concludes with a double bar line.

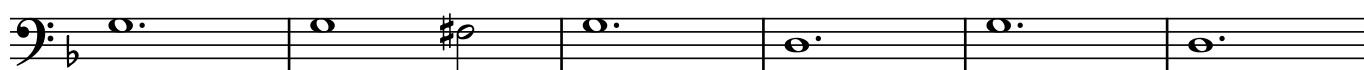
190 Soli



196



202



208



214



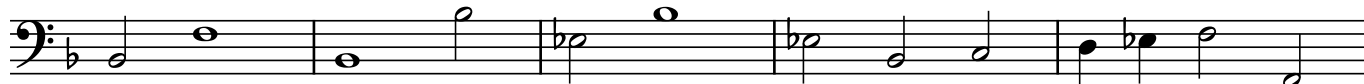
220



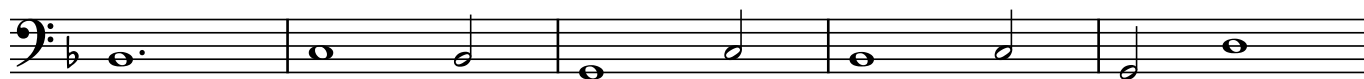
225



230



235



240



Adagio

245

Soli



249



253



258

3



Fac me Cruce

265

Soli



270



Allegro

275

Tutti



281



287

